

# EXTREMIFIX™

Cannulated Screw System | MIDSIZE | LARGE

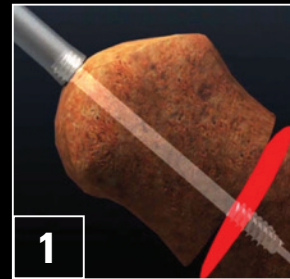


Rethinking Possibilities, Reshaping Lives

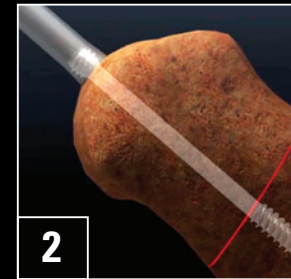
# EXTREMIFIX™

Cannulated Screw System | MIDSIZE | LARGE

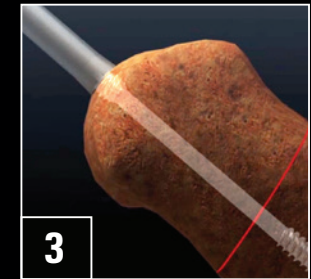
The ExtremiFix Midsize I Large Cannulated screw system offers screws in 4.5 mm, 5.5 mm and 6.5 mm thread diameters, multiple thread options and variety of lengths providing a wide range of options to treat multiple applications of the midfoot, hindfoot and ankle.



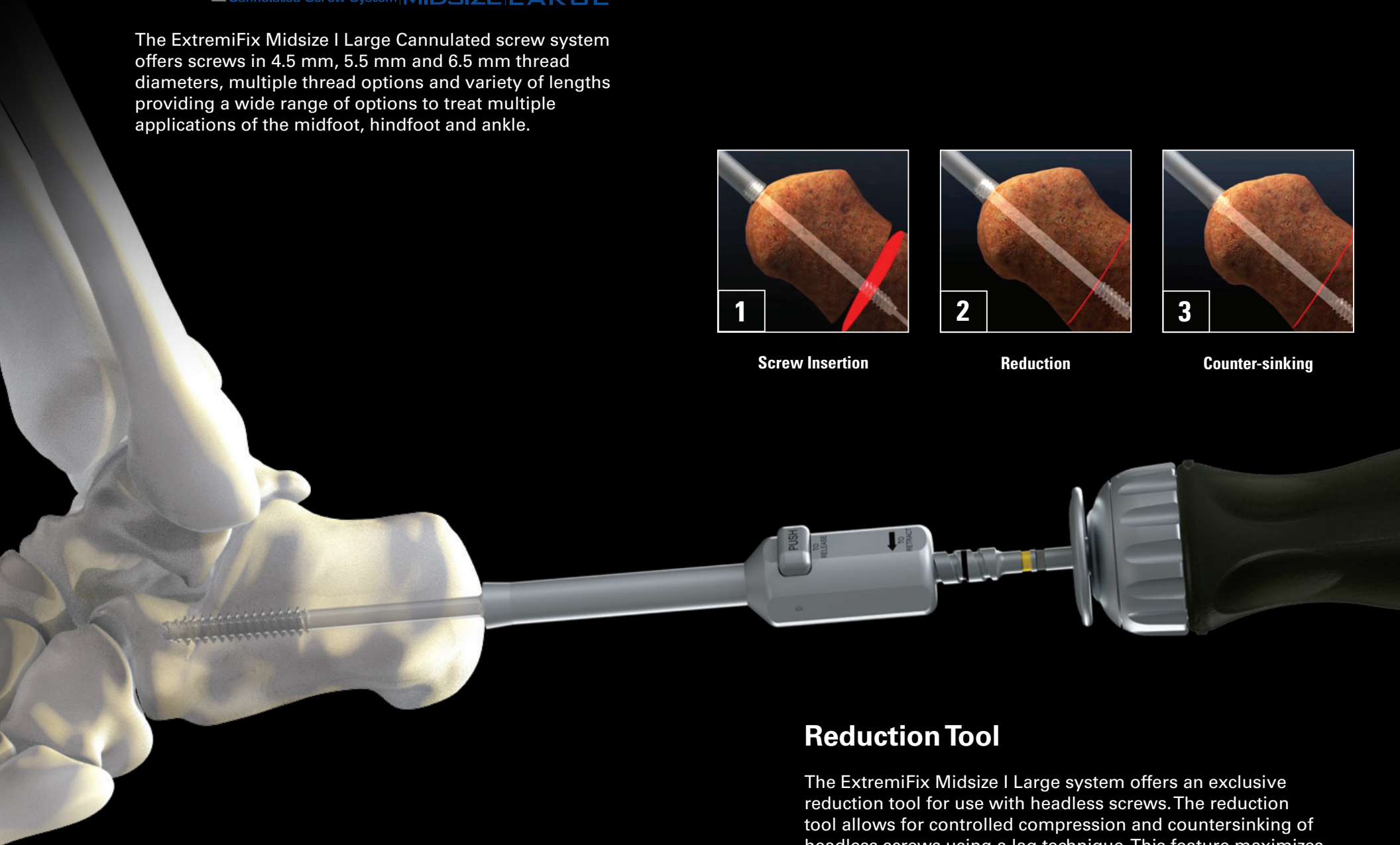
Screw Insertion



Reduction



Counter-sinking



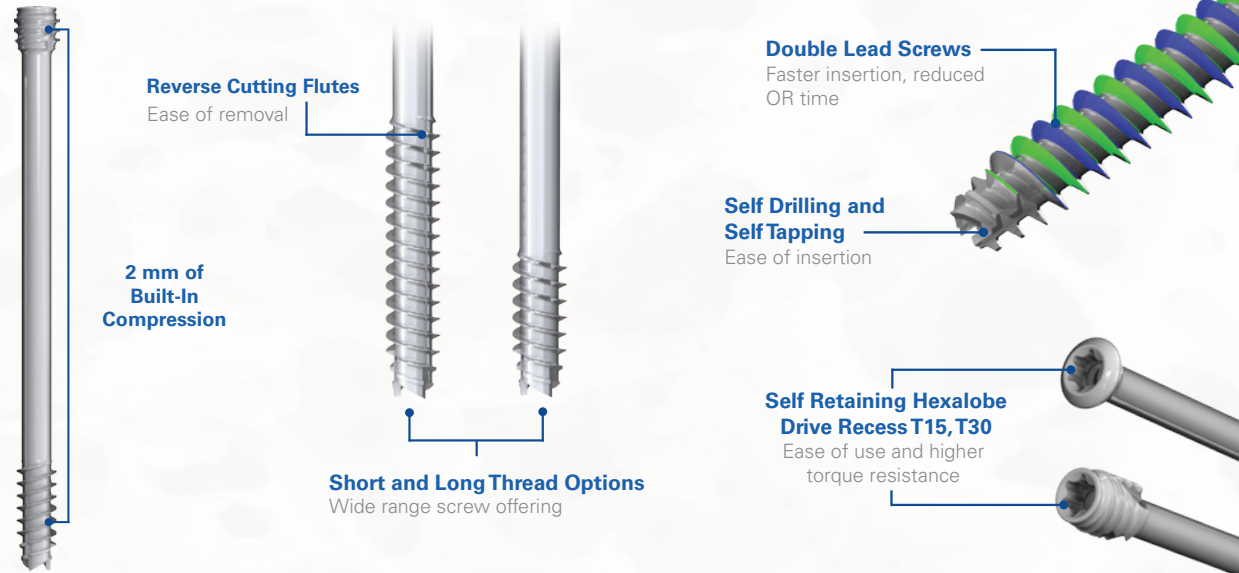
## Reduction Tool

The ExtremiFix Midsize I Large system offers an exclusive reduction tool for use with headless screws. The reduction tool allows for controlled compression and countersinking of headless screws using a lag technique. This feature maximizes gap reduction while minimizing hardware prominence and soft tissue irritation with the use of a headless screw.

## Product Features

The ExtremiFix Midsize I Large Cannulated Screws offers low profile headed and headless screw options. The screws feature self-drilling, self-tapping and reverse cutting flutes for ease of screw insertion and removal.

The system's double lead thread design and Hexalobe driver allows for faster screw insertion and higher torque resistance without compromising the strength of the screw.



## Product Offerings

The **ExtremiFix Midsize I Large** screws are offered in headed and headless options and include the latest screw technology for a reliable and stable fixation of various bones and bone fragments. The system instrumentation includes color coded bands based on screw diameter for easy identification.

SIZE	4.5 mm		5.5 mm		6.5 mm	
MATERIAL	Titanium					
SCREW TYPE	Headed & Headless				Headless	
THREAD	<b>SHORT</b> 1/3 Thread	<b>LONG</b> 1/2 Thread	<b>SHORT</b> 1/3 Thread	<b>LONG</b> 1/2 Thread	<b>SHORT</b> 16mm Thread	<b>LONG</b> 32mm Thread
LENGTH	20-50 mm each 2 mm 55-70 mm each 5 mm	40-50 mm each 2mm 55-70 mm each 5 mm	20-50 mm each 2 mm 55-80 mm each 5 mm	40-50 mm each 2mm 55-80 mm each 5 mm	40-120 mm each 5 mm	40-120 mm each 5 mm
GUIDE WIRE	1.6 x 180 mm				2.8 x 230 mm	
PILOT DRILL	3.1 mm		3.7 mm		4.8 mm	



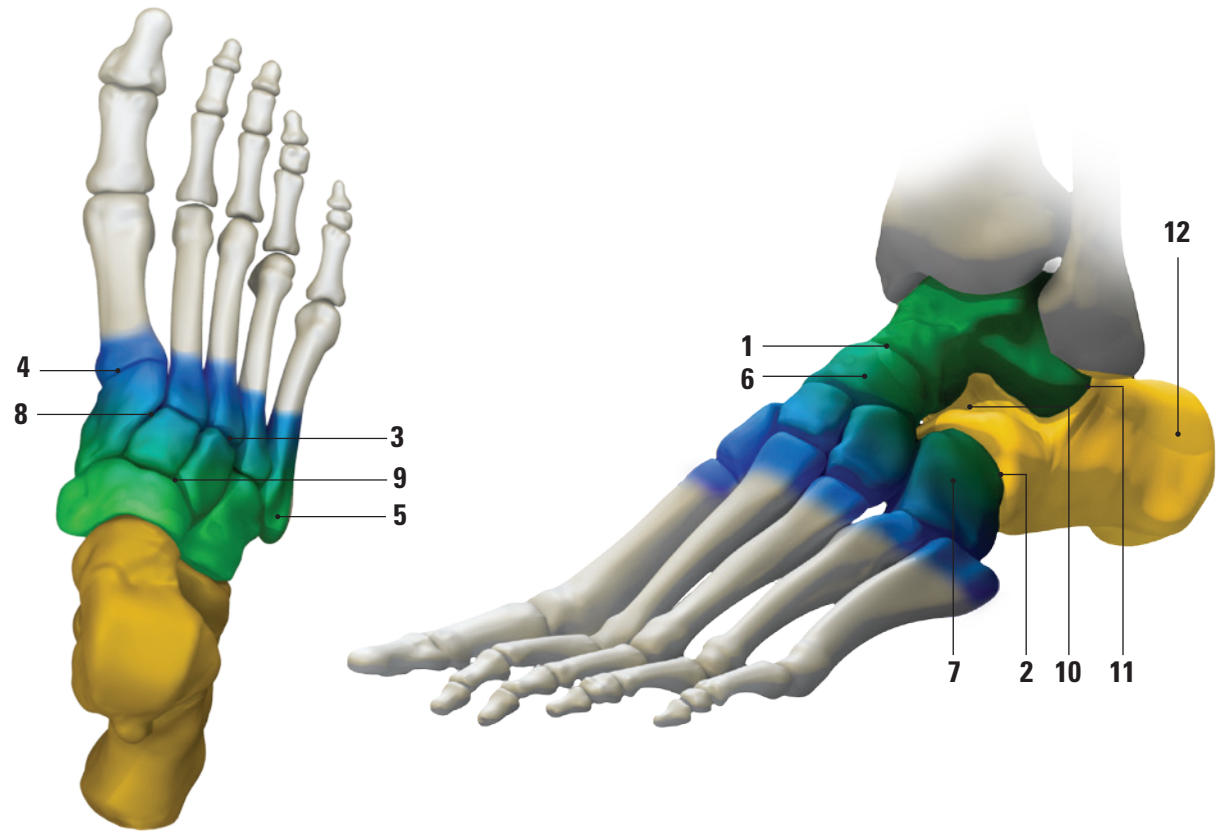
# Foot

## 4.5 mm & 5.5 mm

- 1 Talonavicular Arthrodesis
- 2 Calcaneal Cuboid Arthrodesis
- 3 Tarsometatarsal Fusion
- 4 Lapidus
- 5 5<sup>th</sup> Metatarsal Fractures
- 6 Navicular Fractures
- 7 Cuboid Fracture
- 8 Lisfranc
- 9 Naviculocuneiform Fusion
- 10 Triple Arthrodesis

## 6.5 mm

- 11 Subtalar Arthrodesis
- 12 Calcaneal Osteotomy & Calcaneal Fractures



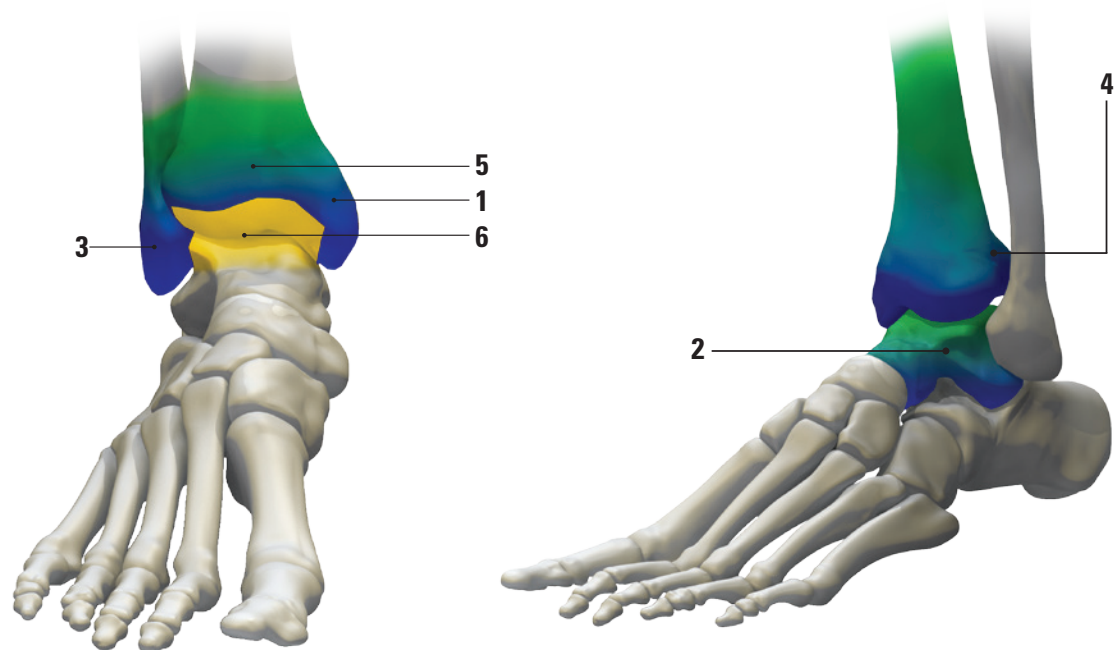
# Ankle

## 4.5 mm & 5.5 mm

- 1 Medial Malleolar Fracture
- 2 Talar Fractures
- 3 Lateral Malleolar Fracture
- 4 Posterior Malleolar Fracture
- 5 Distal Tibial Pilon Fractures

## 6.5 mm

- 6 Ankle Arthrodesis



# OsteoMed Products



ExtremiFix Headless Cannulated Screws



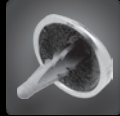
ExtremiFix Cannulated Screws



Large Cannulated Screws



ExtremiFuse



EnCompass



EnCompass Lessers



Hemi



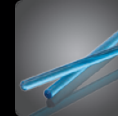
ReFlexion



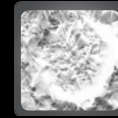
InterPhlex



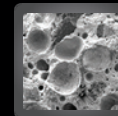
Talar-Fit



Inion



OsteoVationEX



OsteoVation QWIK



## **OSTEOMED**

3885 Arapaho Rd.  
Addison, TX 75001

Customer Service: 800.456.7779

Outside the U.S.: 001.972.677.4600

Fax: 800.390.2620

Fax Outside the U.S.: 001.972.677.4709

E-mail: [customer.service@osteomed.com](mailto:customer.service@osteomed.com)

[www.osteomed.com](http://www.osteomed.com)

P/N 030-2024 Rev.A