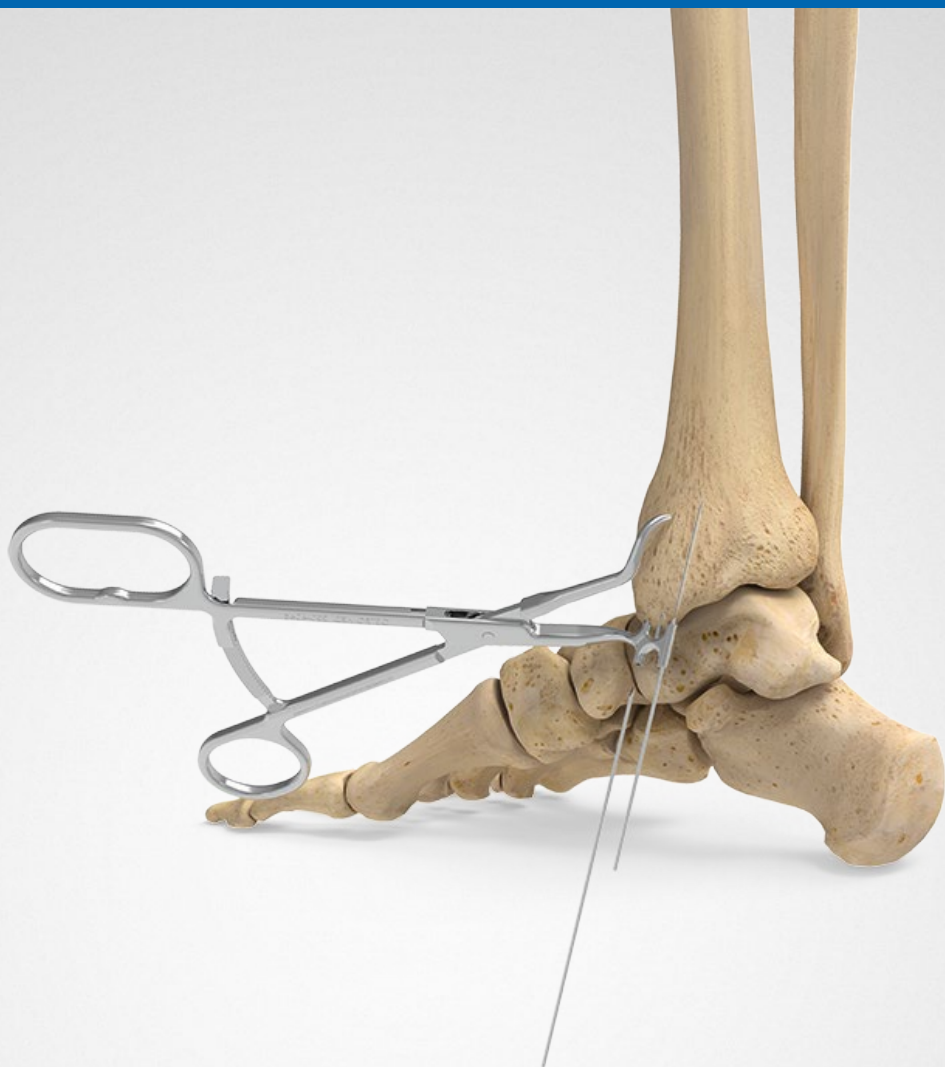




Medial Malleolar Clamp

Supplemental Use Guide—Foot and Ankle



A highly nimble and responsive company, OsteoMed® is a leading global innovator, developer, manufacturer and marketer of specialty medical devices, surgical implants and powered surgical instruments.



Medial Malleolar Clamp—Supplemental Use Guide

The Medial Malleolar Clamp is intended to aid in parallel wire placement in malleolar fractures of the tibia. The Medial Malleolar Clamp is validated for use with the OsteoMed ExtremiFix™ Cannulated Screw System | Mini & Small and the ExtremiFix™ Cannulated Screw System. This guide is intended for supplemental use only and is not intended to be used as a stand-alone surgical technique.

	Definition
Warning	Indicates critical information about a potential serious outcome to the patient or the user.
Caution	Indicates instructions that must be followed in order to ensure the proper use of the device.
Note	Indicates information requiring special attention.

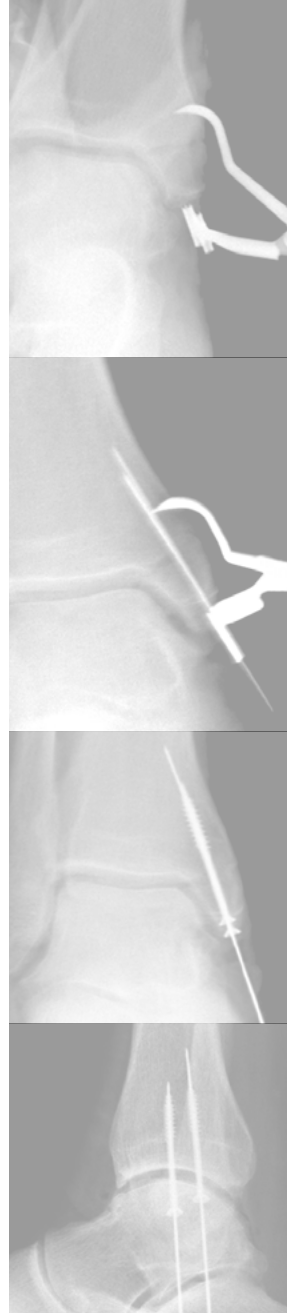


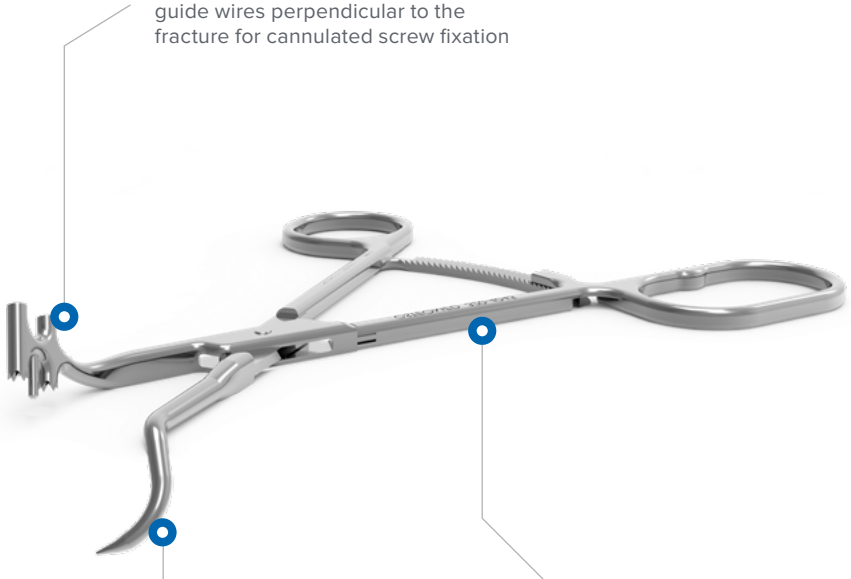
Table of Contents

System Features	3
Medial Malleolar Clamp Technique	4
Ordering Information	6

System Features

Parallel Guide Wire Placement

Allows surgeon to place two .045" guide wires perpendicular to the fracture for cannulated screw fixation



Pointed Reduction Clamp

Designed to reduce and stabilize the medial malleolar fragment during guide wire placement

Ergonomic Design

Left and right-specific bone reduction clamp with ratcheting handle for ease of use



Medial Malleolar Clamp, Left
(320-4045)



Medial Malleolar Clamp, Right
(320-4046)

Medial Malleolar Clamp

1 Reduce Bone Fragment with Clamp

Place the parallel guide wire side of the Medial Malleolar Clamp (320-404X) onto the distal tip of the medial malleolus and the pointed reduction clamp side of the Medial Malleolar Clamp onto the proximal portion of the medial malleolus to reduce the fracture as necessary.

Optional: A drill bit or guide wire may be used to create a pilot hole for the pointed reduction clamp tip.

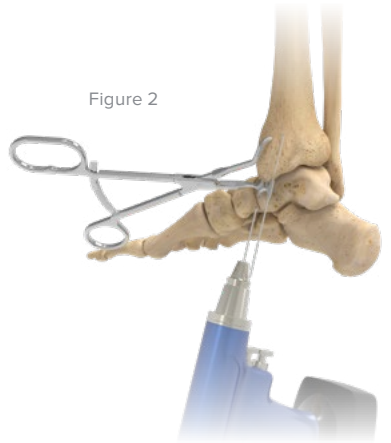
Figure 1



2 Insert .045" Guide Wire

Insert two .045" guide wires into the parallel guide wire side of the clamp. Check guide wire placement under fluoroscopy to ensure the fracture is properly reduced.

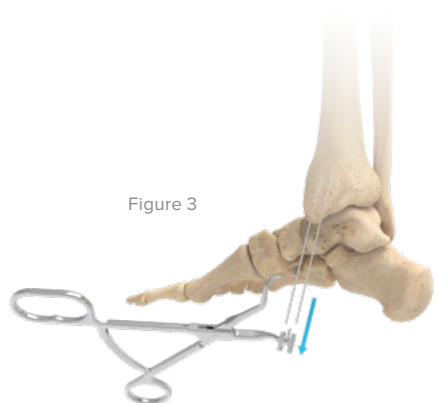
Figure 2



3 Remove Medial Malleolar Clamp

Remove the Medial Malleolar Clamp from the bone.

Figure 3



Medial Malleolar Clamp [continued]

4 Insert OsteoMed Cannulated Screws

Drill, measure, and insert the chosen diameter of OsteoMed Cannulated Screws over the .045" Guide Wires.

Figure 4

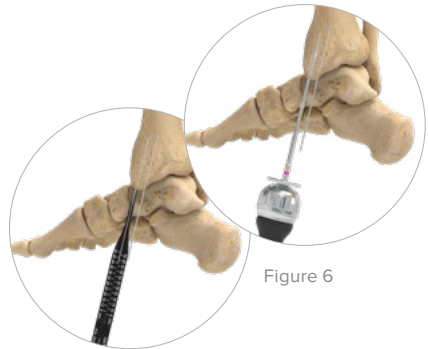
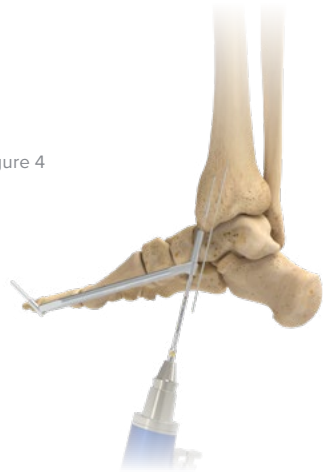


Figure 5

Figure 6

5 Remove .045" Guide Wires

Remove the .045" Guide Wires and check final screw placement under fluoroscopy.

Figure 7



Ordering Information

Instruments

Medial Malleolar Clamp, Left	320-4045
------------------------------	----------

Medial Malleolar Clamp, Right	320-4046
-------------------------------	----------

Note: To learn more about the full line of OsteoMed innovative surgical solutions, please contact your authorized OsteoMed distributor, call 888.456.7779, or visit www.osteomed.com.



Medial Malleolar Clamp, Left
(320-4045)



Medial Malleolar Clamp, Right
(320-4046)



OsteoMed Headquarters

3885 Arapaho Rd
Addison, TX 75001
Customer Service: 800.456.7779
International: 001.972.677.4600
Email: customer.service@osteomed.com
www.osteomed.com

030-2231 Rev.A | Effective: 2021/09 | © 2021 OsteoMed® LLC

These materials contain information about products that may or may not be available in any particular country or may be available under different trademarks in different countries. The products may be approved or cleared by governmental regulatory organizations for sale or use with different indications or restrictions in different countries. Products may not be approved for use in all countries. Nothing contained in these materials should be construed as a promotion or solicitation for any product or for the use of any product in a particular way that is not authorized under the laws and regulations of the country where the reader is located. Nothing in these materials should be construed as a representation or warranty as to the efficacy or quality of any product, nor the appropriateness of any product to treat any specific condition. Physicians may direct questions about the availability and use of the products described in these materials to their authorized OsteoMed distributor. Specific questions patients may have about the use of the products described in these materials or the appropriateness for their own conditions should be directed to their own physician.

OsteoMed® and ExtremiFix™ are registered trademarks of OsteoMed® LLC.