

+ acumed®
Ulna Nail 2
with Tip-Loc™ Technology

Product Overview





Acumed® Ulna Nail 2

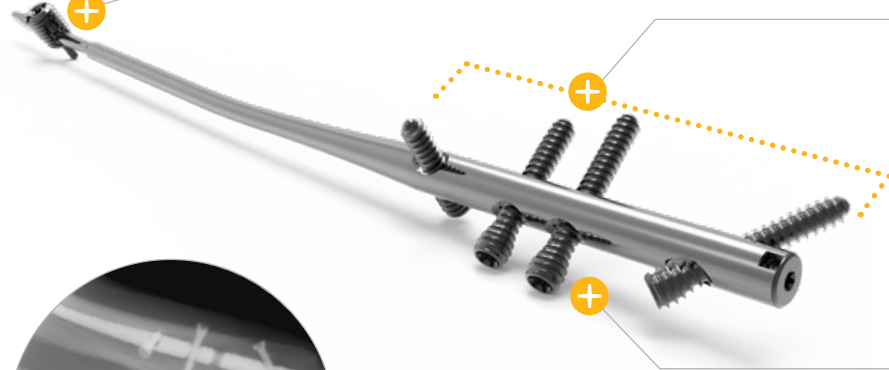
Designed in conjunction with Roy Sanders, MD, the Acumed Ulna Nail 2 is designed to address simple, transverse, and short oblique fractures as well as osteotomies of the ulna.

The system includes three nail diameters and seven length options, power reamers and carbon fiber radiolucent targeting guides to streamline the procedure, threaded holes within the nail, headless hexalobe screws to help minimize soft-tissue irritation, and the option to lock the nail distally, providing additional fixation within the canal.

The Ulna Nail 2 must be used in conjunction with the Acumed Fibula and Forearm Nail 2 Base Set, which contains universal instrumentation to implant the Ulna Nail 2, Fibula Nail 2, and screws.



Tapered Offset Nail Tip
Tapered and offset nail tip designed to aid in crossing the fracture site



Optional Distal Fixation
The Tip-Loc™ Bushing and Set Screw offer the option to lock the nail distally, providing additional fixation within the canal

Fixed-Angle Construct
All screw holes are threaded to provide a fixed-angle construct. Posterior-to-anterior screws target the coronoid and olecranon processes



Lateral view of screw holes targeting the olecranon and coronoid process

Low-Profile Screws
3.5 mm headless hexalobe screws are low-profile and are intended to minimize soft-tissue irritation

Comprehensive System

The Acumed Ulna Nail 2 includes 21 nails offered in 3 diameters and 7 lengths, 3.5 mm headless and nonlocking hexalobe screws, and the option to lock the nail distally.

Straight Ulna Nail 2

Designed specifically to address proximal olecranon fractures, this short (120 mm) nail has a screw trajectory engineered to maximize purchase in bone.

**3.0 mm
Straight
Ulna Nail 2**



**3.6 mm
Straight
Ulna Nail 2**



**4.0 mm
Straight
Ulna Nail 2**



3.0 mm Ulna Nail 2



170 mm, 190 mm, 210 mm,
230 mm, 250 mm, and 270 mm

3.6 mm Ulna Nail 2



170 mm, 190 mm, 210 mm,
230 mm, 250 mm, and 270 mm

4.0 mm Ulna Nail 2



170 mm, 190 mm, 210 mm,
230 mm, 250 mm, and 270 mm

Note: All ulna nail tail diameters are 6.35 mm

Optional End Caps

End caps assist in limiting ossification over the end of the nail, making the nail threads easier to engage if removal is desired. End caps also allow for the creation of an intermediate nail length while adjusting for anatomic variances and screw trajectories.

End Caps

+0.4 mm



+5 mm



+10 mm



+15 mm



Universal Instrumentation

The Ulna Nail 2 is delivered in sterile packaging and is designed to be used in conjunction with the Fibula and Forearm Nail 2 Base Set, which houses universal instrumentation to implant the Ulna Nail 2, Fibula Nail 2 and screws. Reaming can be achieved under power to optimize operative time, or by hand if preferred.



Targeting Guide

The FFN Handle is intended to aid in nail insertion, to act as an impactor for the hammer, or aid in removal by engaging its threads with the nail. The handle doubles as a tightening device when assembling the targeting guide

Screws

Ulna Nail 2 implants accept both 3.5 mm Headless Hexalobe Screws and 3.5 mm Nonlocking Hexalobe Screws

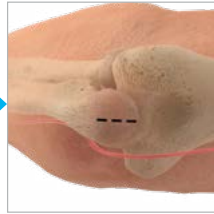
Headless screws lock into the threaded holes within the nail and are intended to create a low-profile construct aimed at minimizing soft-tissue irritation

Ulna Nail 2 Surgical Technique

**Preoperative
Planning and
Evaluation**



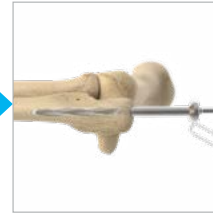
**Incision and
Entry Point**



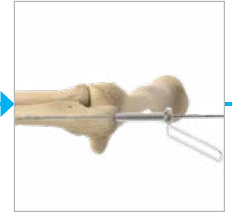
**Ulna Canal
Preparation**



**Proximal Nail
Drilling**



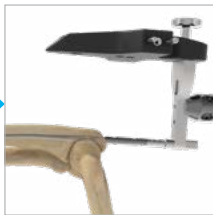
Canal Reaming



Ulna Nail to Base Plate Attachment



Nail Insertion and Positioning



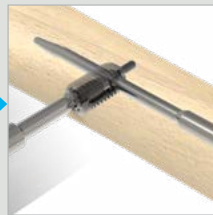
Posterior/Anterior Screw Placement



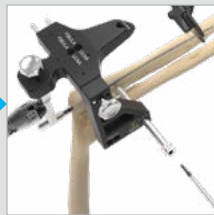
Optional End Cap Placement



Optional Tip-Loc Set Screw



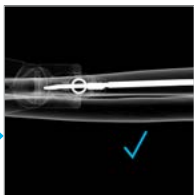
Optional Lateral/Medial Screw Placement



Optional Tip-Loc™ Incision & Clamp Placement



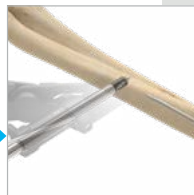
Optional Tip-Loc Ulna Nail Targeting



Optional Tip-Loc Drilling & Preparation



Optional Tip-Loc Bushing Insertion





Acumed Headquarters
5885 NE Cornelius Pass Road
Hillsboro, OR 97124

Office: +1.888.627.9957
Office: +1.503.627.9957
Fax: +1.503.520.9618
www.acumed.net

HNW00-09-B | Effective: 2020/10 | © 2020 Acumed® LLC

These materials contain information about products that may or may not be available in any particular country or may be available under different trademarks in different countries. The products may be approved or cleared by governmental regulatory organizations for sale or use with different indications or restrictions in different countries. Products may not be approved for use in all countries. Nothing contained on these materials should be construed as a promotion or solicitation for any product or for the use of any product in a particular way which is not authorized under the laws and regulations of the country where the reader is located. Specific questions physicians may have about the availability and use of the products described on these materials should be directed to their particular authorized Acumed distributor. Specific questions patients may have about the use of the products described in these materials or the appropriateness for their own conditions should be directed to their own physician.

Acumed®, and Tip-Loc™ are registered trademarks of Acumed LLC