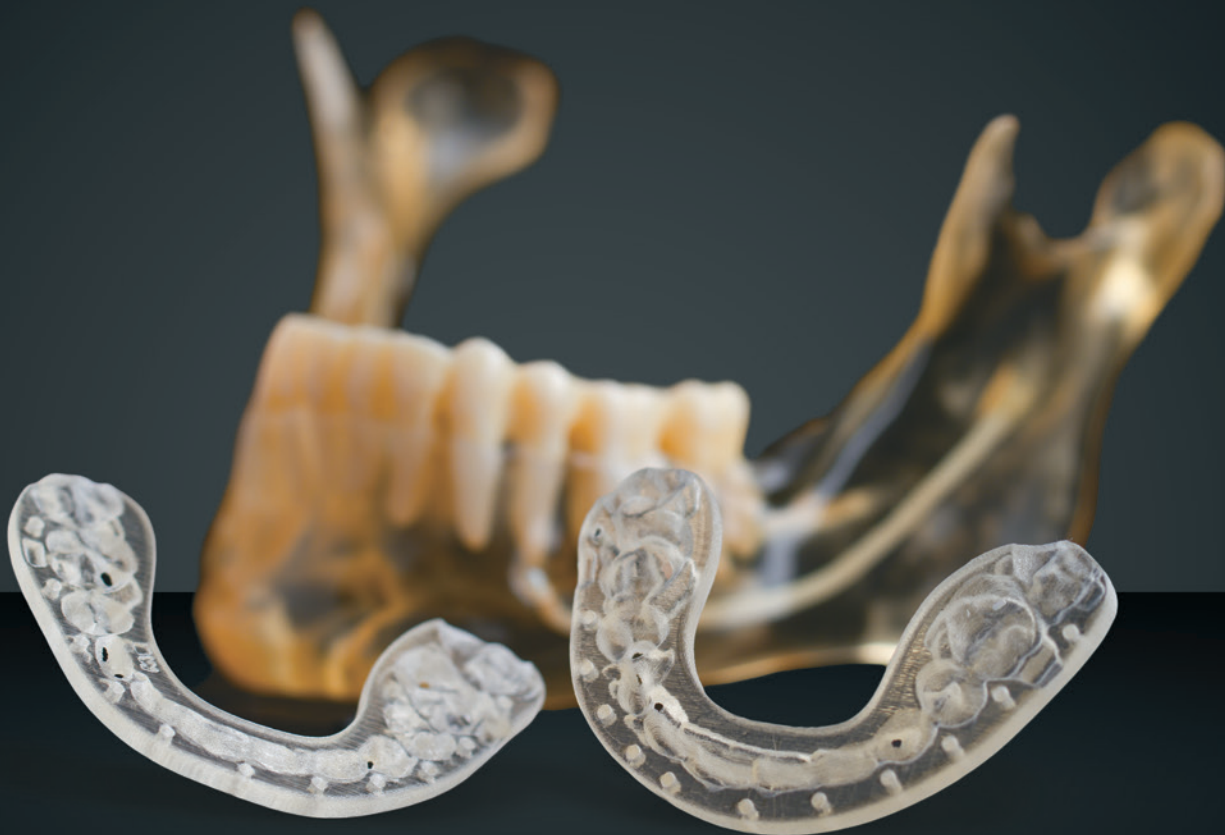


# DSP

DIGITAL SURGICAL PLANNING



# Precise 3D Planning

The OsteoMed Digital Surgical Planning service (DSP), allows surgeons to perform entire surgical procedures through a digital 3D environment.

## Features

- Simulate osteotomies and bone movements
- Predict soft tissue repositioning
- Visualize occlusal planes
- Compare pre-operative and post-operative results side by side
- Superimpose stone models of the teeth over patient's anatomy

## Benefits

- Reduce patient risk
- Higher accuracy planning
- Faster than creating splints in lab or on an articulator
- Identify potential problems in surgical plan prior to surgery
- Transfer digital plan to surgery with custom guides and models

# Surgical Splints

Surgical splints provides for the correct jaw positioning during surgery. We utilize the latest technology in 3D printing allowing us to provide accurate splints quickly.

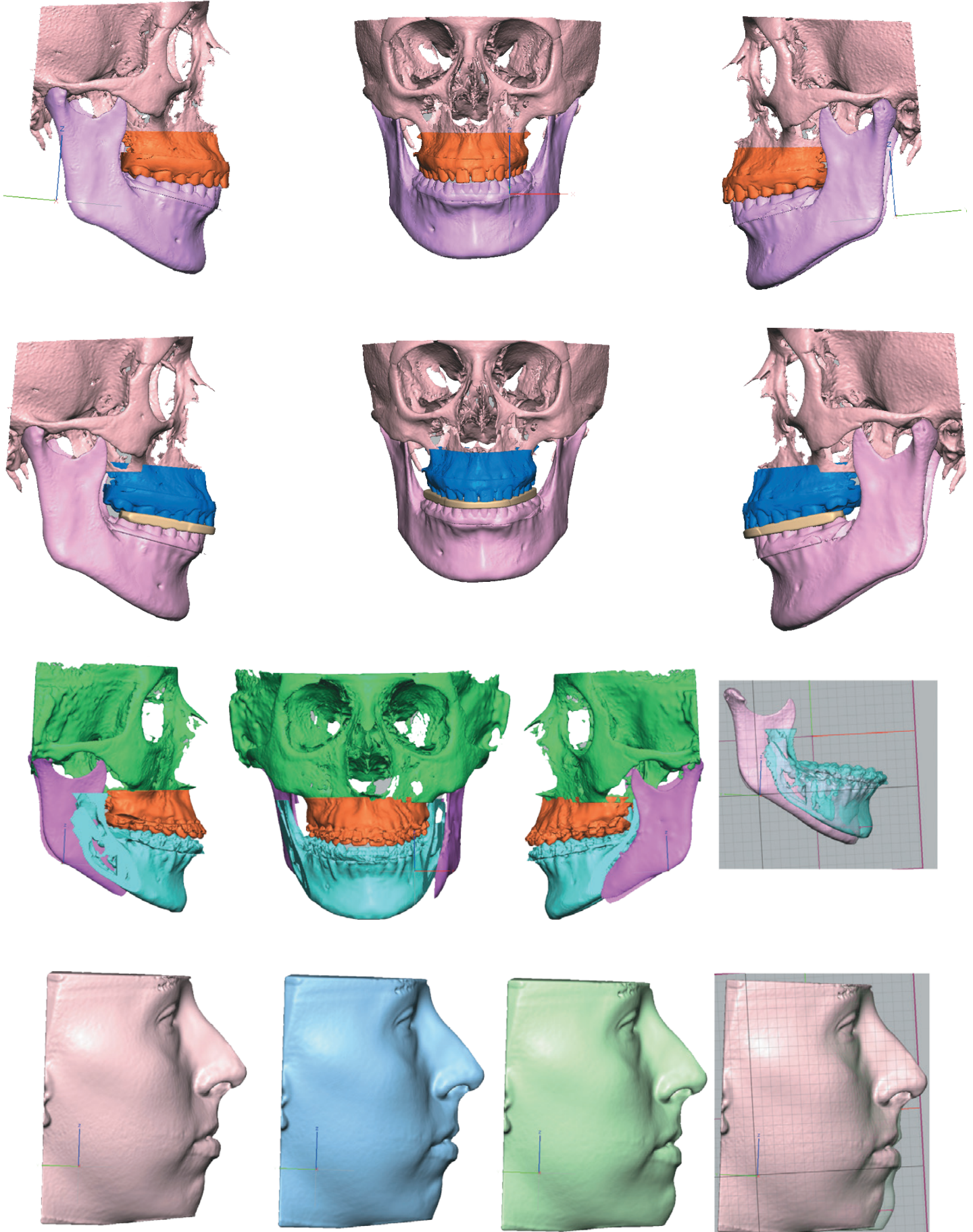
## Splint Options

- DSP-001 Intermediate splint
- DSP-002 Intermediate and final splint
- DSP-004 Intermediate, sandwich and final splint

## DSP Timeline



# Double Jaw Surgery with Soft Tissue Prediction





**OSTEOMED**

3885 Arapaho Rd.

Addison, TX 75001

Customer Service: 800.456.7779

Customer Service Fax: 800.390.2620

[www.osteomed.com](http://www.osteomed.com)

P/N 030-1730 Rev.A



A COLSON ASSOCIATE