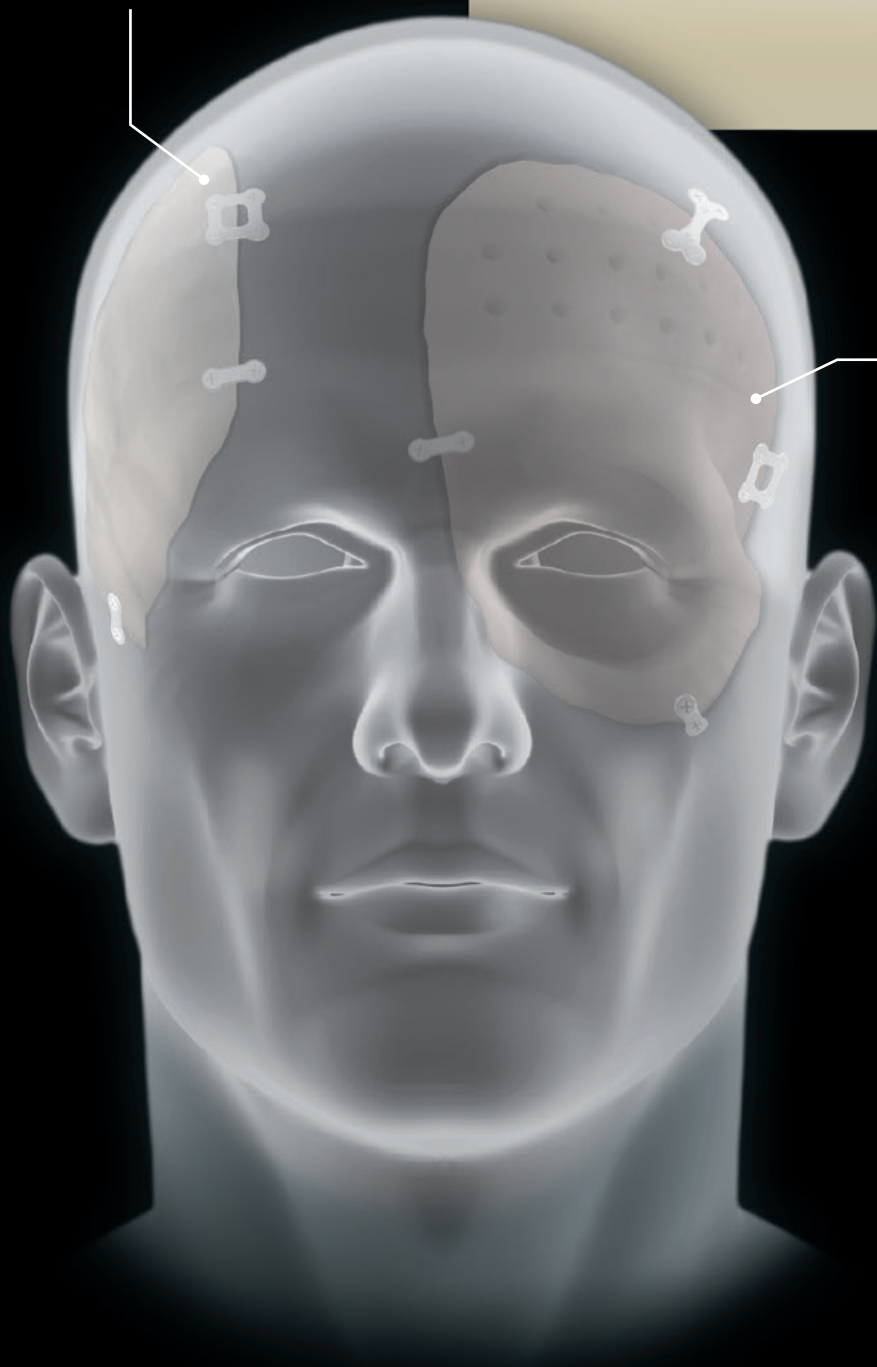


OsteoMatch™

PATIENT MATCHED IMPLANTS

PMMA

PEEK





Rethinking Possibilities, Reshaping Lives

RETHINKING
POSSIBILITIES
RESHAPING LIVES

At OsteoMed, we work alongside surgeons who devote their lives to improving those of others. Our goal: rethinking the possibilities that have the power to reshape lives.

With a spirit of innovation and a relentless focus on quality, we offer surgeons a wide range of choices for neurosurgical and craniomaxillofacial procedures.

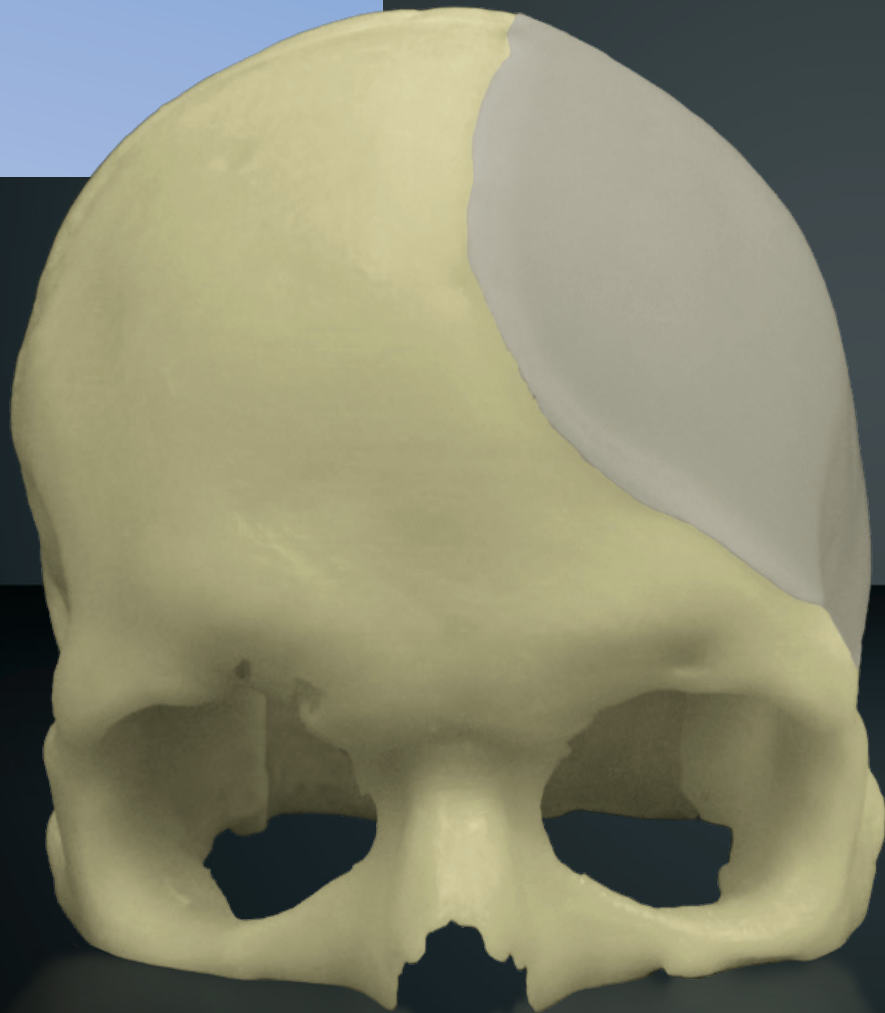
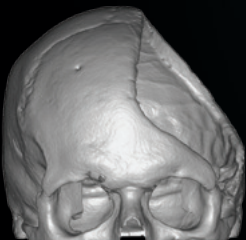
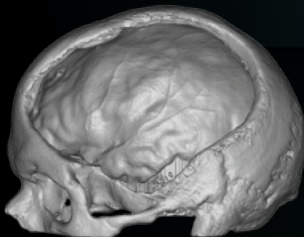
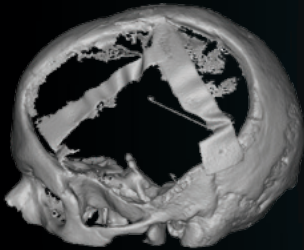
OsteoMatch™

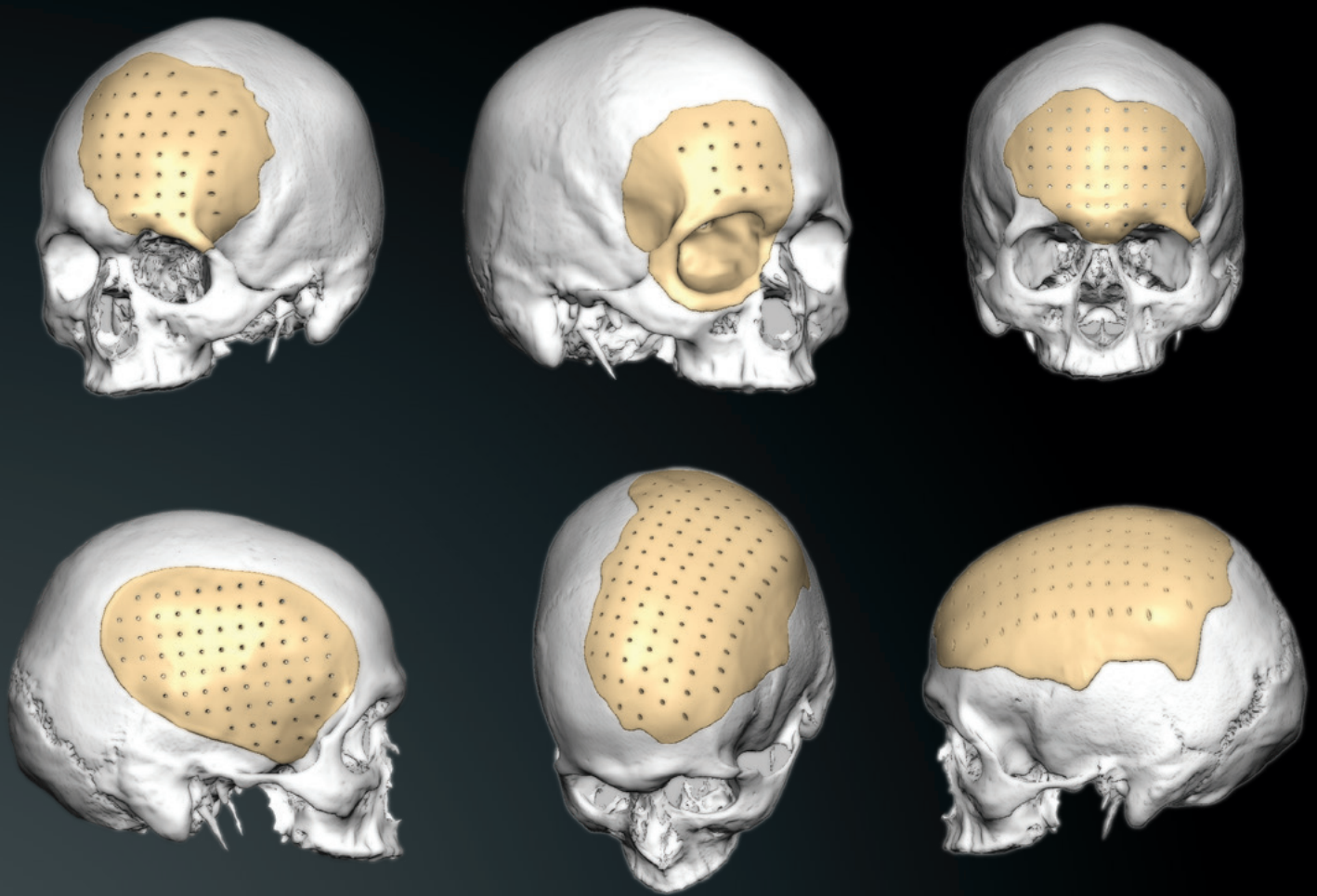
OsteoMatch PMMA

- Beveled, specially textured edges allow micro in growth of skull tissues.
- Scalp & dura surfaces of the implant are solid and non-porous to discourage tissue ingrowth, adhesion and non-vascularized infection.
- OsteoMatch is fine-tuned by hand to complement the contour of the neighboring bone in the patient-specific skull model, providing a superior anatomical fit.

OsteoMatch PEEK

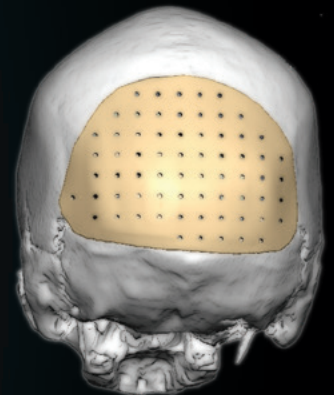
- Optimal anatomical fit versus conventional fixation.
- Reduce operating time.
- Excellent aesthetic results.
- Autoclavable
- Fracture resistant.



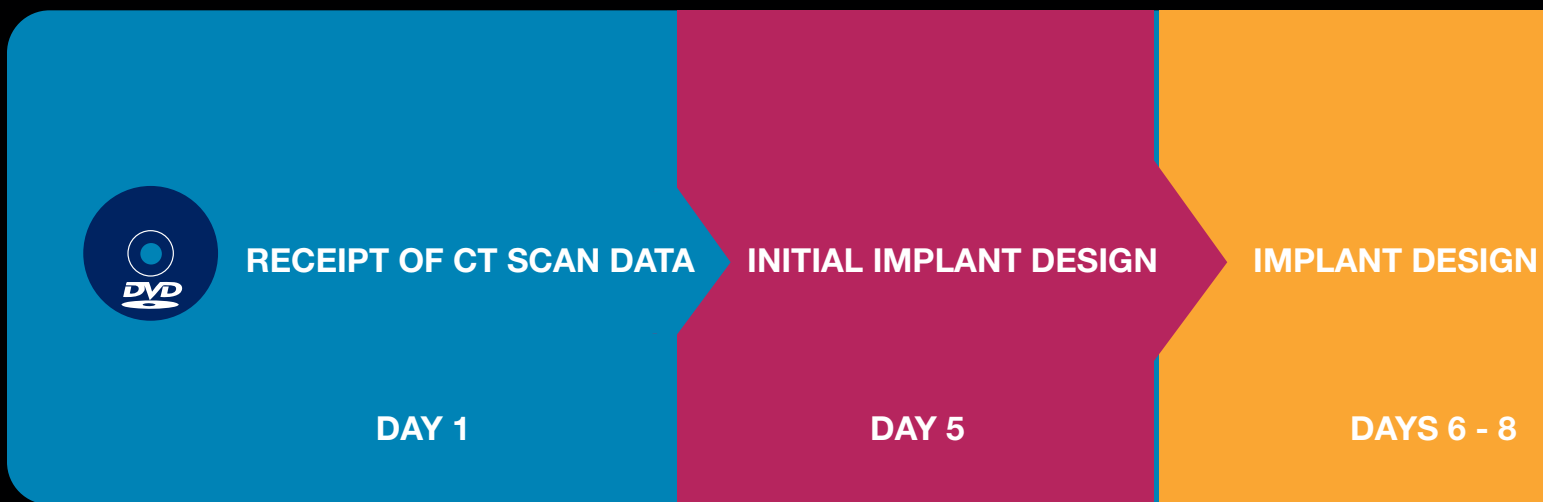


Cranial Applications

OsteoMed's new PEEK (Polyether Ether Ketone) Patient Matched Implant provides an improved solution for patients with a cranial defect. Technology and craftsmanship produce a perfect fit to the specific anatomical requirement in a custom implant. Highly temperature resistant, the PEEK PMI may be vacuum sterilized. Depending on the defect size, OsteoMatch PEEK can be provided in single or multiple pieces. Additionally, the implant can be reliably fixated using OsteoMed's cranial fixations systems.



OsteoMatch Timeline



OsteoMatch PEEK

Item	Description
ACSS-001	OsteoMatch PEEK Implant 20-100sq cm
ACSM-002	OsteoMatch PEEK Implant 100-150sq cm
ACSL-003	OsteoMatch PEEK Implant 150-200sq cm
ACSX-004	OsteoMatch PEEK Implant 200-325sq cm

OsteoMatch PMMA

Item	Description
218-0100	OsteoMatch Implant, Medium (<75 sq cm)
218-0101	OsteoMatch Implant, Large (75 sq cm to 150 sq cm)
218-0102	OsteoMatch Implant, Ex-Large (>150 sq cm)





OSTEOMED

3885 Arapaho Rd.
Addison, TX 75001
Customer Service: 800.456.7779
Customer Service Fax: 800.390.2620

www.osteomed.com



A COLSON ASSOCIATE

P/N 030-1707 Rev.C