

Milled from solid titanium, our **patient-tailored implants** restore form and function



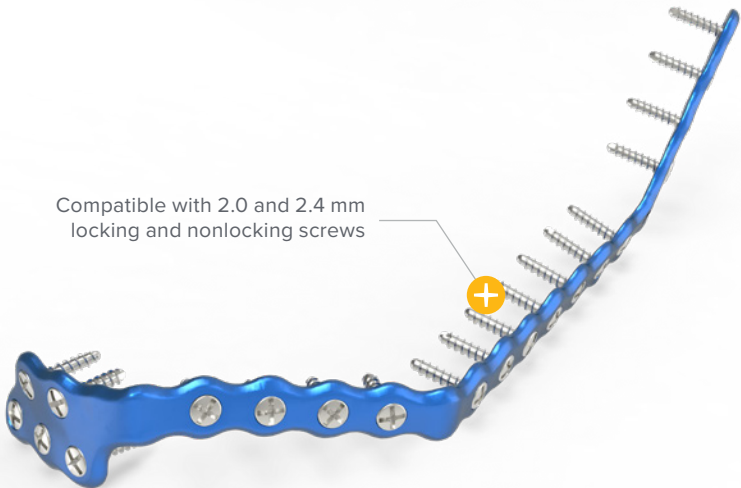
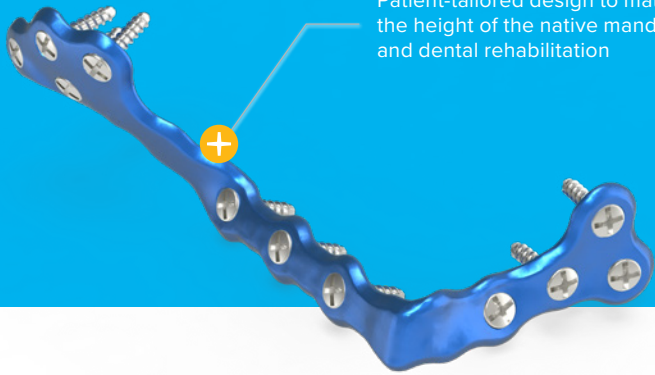
Flexibility to plan, control, and **view cases at any time, from any device**

Your Craniomaxillofacial Partner in
Advanced, Patient-Tailored Care

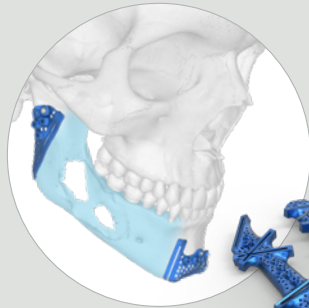
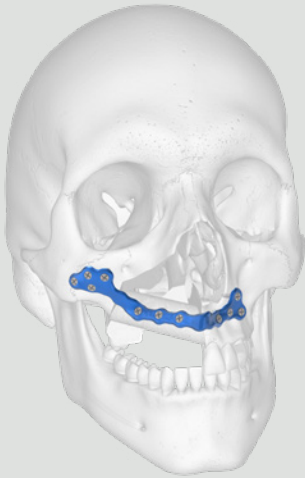
Acumed Digital Surgery™ Reconstruction Solutions

Patient-Tailored Solutions

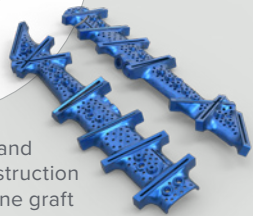
Reconstruction implants and guides, designed from individual CT scans provide patient-tailored designs intended to restore anatomical contour in complex mandible and maxillary reconstructions.



Acumed Digital Surgery™ Reconstruction Solutions



Primary maxillary and
mandibular reconstruction
with or without bone graft



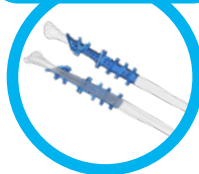
Digitally Integrated Surgical Reconstruction Platform

The platform allows direct manipulation of patient anatomy or the use of autonomous planning features, providing flexibility to plan, control, and view cases at any time, from any device.

Digital Surgical Planning



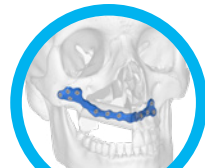
Fibula Cutting Guides



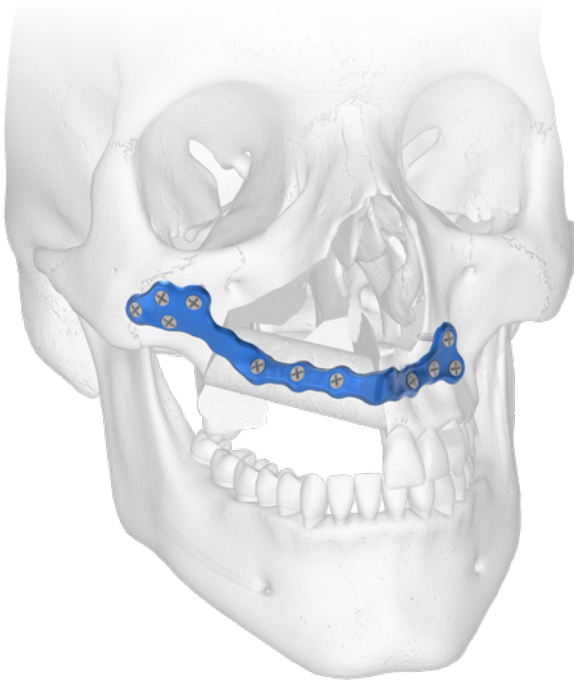
Mandibular Cutting Guides



Patient-Tailored Maxillary Implant



Contact Your Local Sales Rep for More Information



Learn More About Acumed Digital Surgery™
Reconstruction Solutions
go.acumed.net/CMF-25-ADS



www.acumed.net  @acumed  @acumedglobal
a Marmon Medical | Berkshire Hathaway Company

CMF10-02-C | Effective: 2026/03 | © 2026 Acumed® LLC

Acumed® is a registered trademark of Acumed LLC.